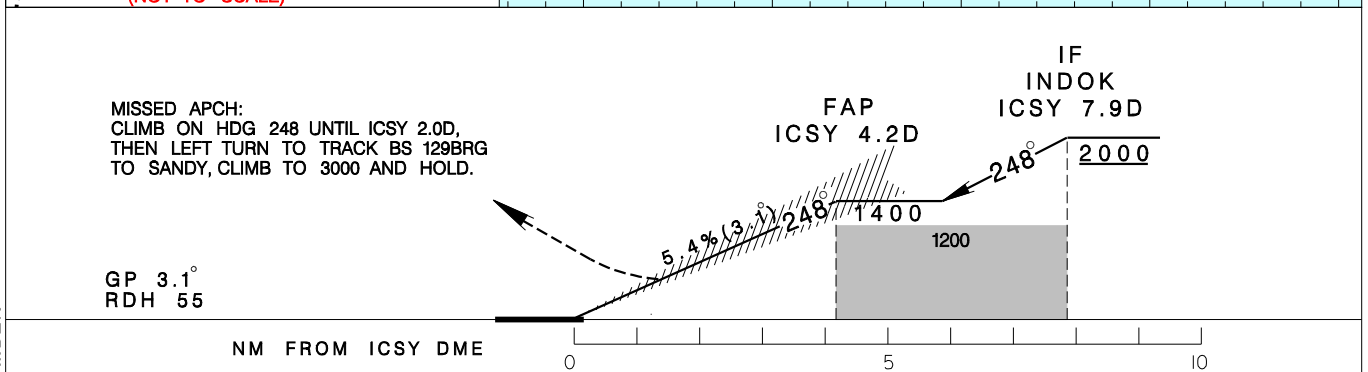
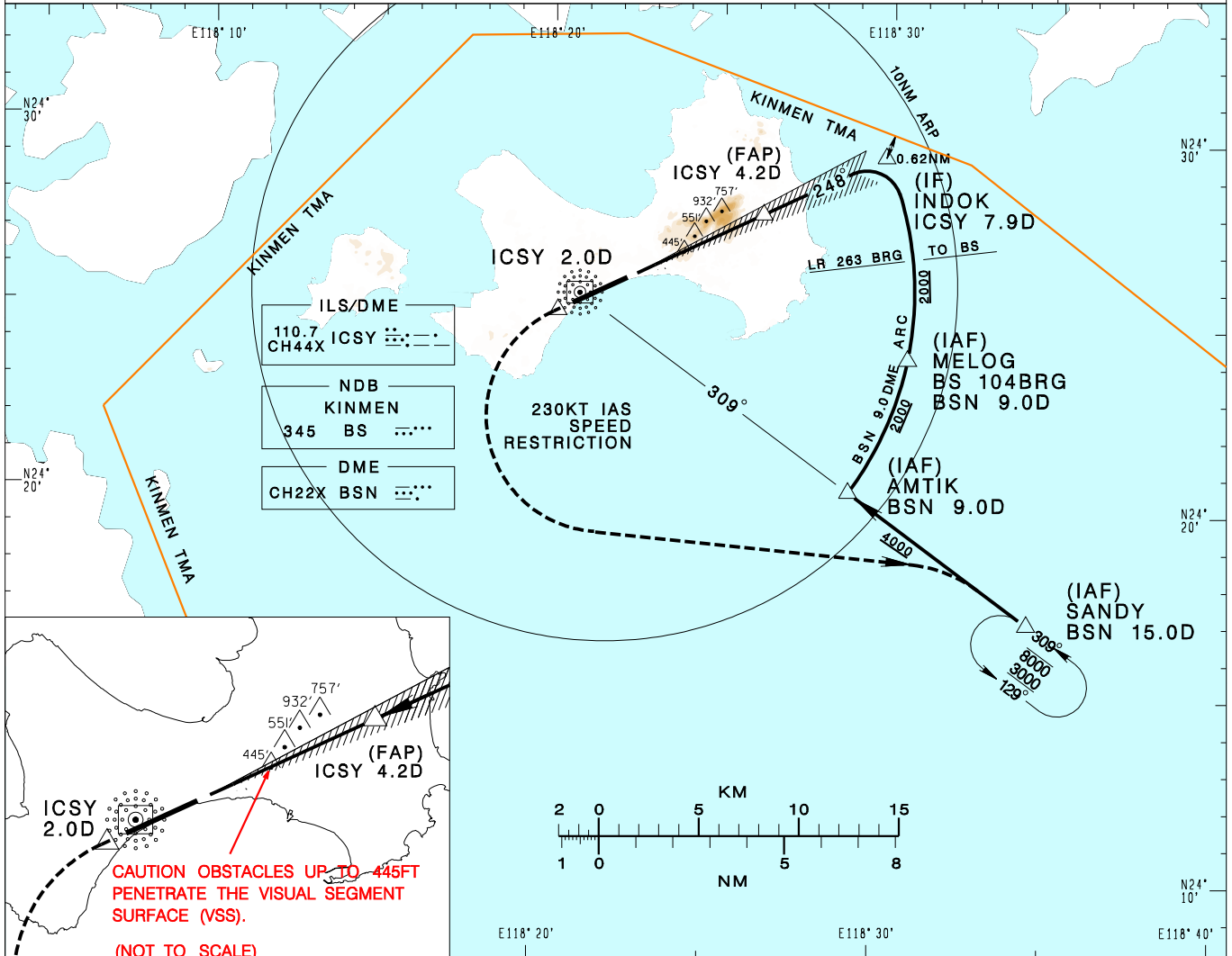


金門/尚義機場
KINMENSHANGYI AD

RCBS
ILS RWY24

| | | | | |
|--|---------------------------|--------------------|---------------------|-----------|
| KAOHSIUNG APP 124.6 133.1 | KINMEN TWR 118.0 126.2 | ATIS 127.2 | VAR 4° W - 2021 | 4800' |
| Apt Elev: 56' | Rwy24 THR Elev: 18' | Trans Level: FL130 | | |
| BEARINGS ARE MAGNETIC; DISTANCES ARE NAUTICAL MILES; ELEVATIONS, HEIGHTS IN FEET | | | | |
| MSA ARP 25NM | | | | |



| MINIMA (OCA IN FT, VIS IN M, OCH IN FT) | | | | |
|---|--------------|--------------|--------------|--------------|
| CATEGORY | A | B | C | D |
| STRAIGHT IN | 576/2100 558 | 588/2200 570 | 597/2200 579 | 607/2300 589 |
| STRAIGHT IN (ALS OUT) | 576/2500 558 | 588/2600 570 | 597/2600 579 | 607/2700 589 |
| CIRCLING | N/A | | | |

NOTE
1. CAUTION HIGH TERRAIN NORTH OF THE FINAL APCH COURSE; SHI-MOUNTAIN & A 445FT-ANTENNA TOWER AT 1.6NM FROM THR OF RWY24.
2. CAUTION OBSTACLES UP TO 445FT PENETRATE THE VISUAL SEGMENT SURFACE (VSS).
3. ATS SURVEILLANCE REQUIRED.
4. PILOT SHALL EXERCISE WITH CAUTION NOT TO DEVIATE OUT OF TMA BDY.
*DME REQUIRED

CHANGES: NEW PAGE NUMBER